



SCHOOL UNIFORM 2026

NEW HOPE CHRISTIAN SCHOOL



FROM THE PRINCIPAL

At New Hope Christian School, our uniform represents the values and community we share. We do not wear uniforms simply for uniformity, but to foster a sense of belonging, identity, and self-discipline among our students. Each item reflects our commitment to excellence and respect, both for ourselves and for others.

This uniform brochure provides you with a guide to the items that are available. Each uniform item is designed to be practical, comfortable, and aligned with our school's ethos. We are grateful for the thoughtful input that has shaped the choices and that make our uniform both contemporary and meaningful.

We look forward to seeing our students wear their uniform with dignity as a reflection of their place in the New Hope community. Thank you for partnering with us as we continue to uphold the values that define New Hope Christian School.

Mrs Dianne Dowson
Principal

CONTENTS

Junior School Winter	4
Junior School Summer	5
Middle School Winter	6
Middle School Summer	7
Senior School Winter	8
Senior School Summer	9
Junior School Sport	10
Middle / Senior School Sport	11
Accessories	12

PLACE YOUR ORDER

Visit Hannah's Uniform Shop at Pacific Hills

(opening hours on website)

Phone: 9651 0700

Email: hannahs@pacifichills.nsw.edu.au

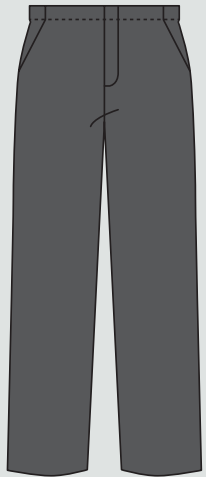
Web: pacifichills.nsw.edu.au/enrol/uniform



**WINTER
JUNIOR SCHOOL**



Short Sleeve Shirt³



Trousers



Grey Striped Socks¹



Black Shoes^{1,2}

**WINTER
JUNIOR SCHOOL**



Long Sleeve Blouse



Tunic




Tights




Black Shoes^{1,2}

**WINTER
JUNIOR SCHOOL – OPTIONAL**



 Blazer




 Blazer



 Tie




 Jumper



 Cardigan

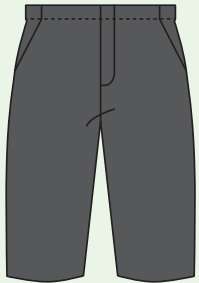


 Black Knee High Socks

**SUMMER
JUNIOR SCHOOL**



Short Sleeve Shirt



Shorts

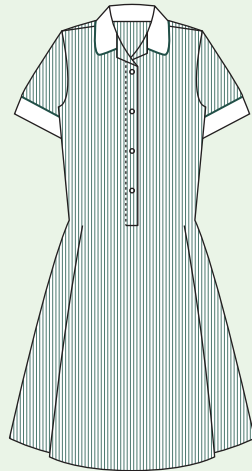


Grey Striped Socks¹



Black Shoes^{1,2}

**SUMMER
JUNIOR SCHOOL**



Dress




White Socks




Black Shoes^{1,2}

**SUMMER
JUNIOR SCHOOL – OPTIONAL**




 Blazer




 Blazer



 Jumper

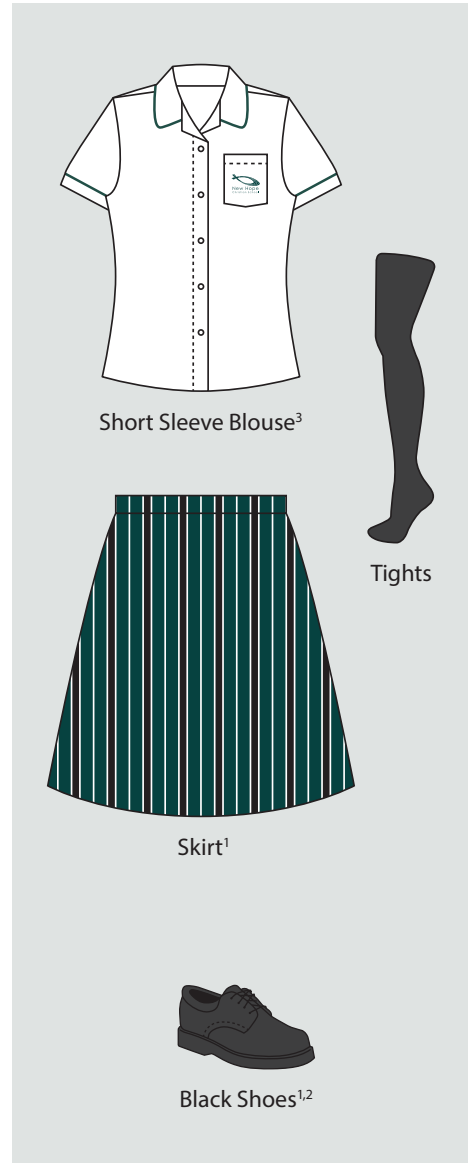


 Cardigan

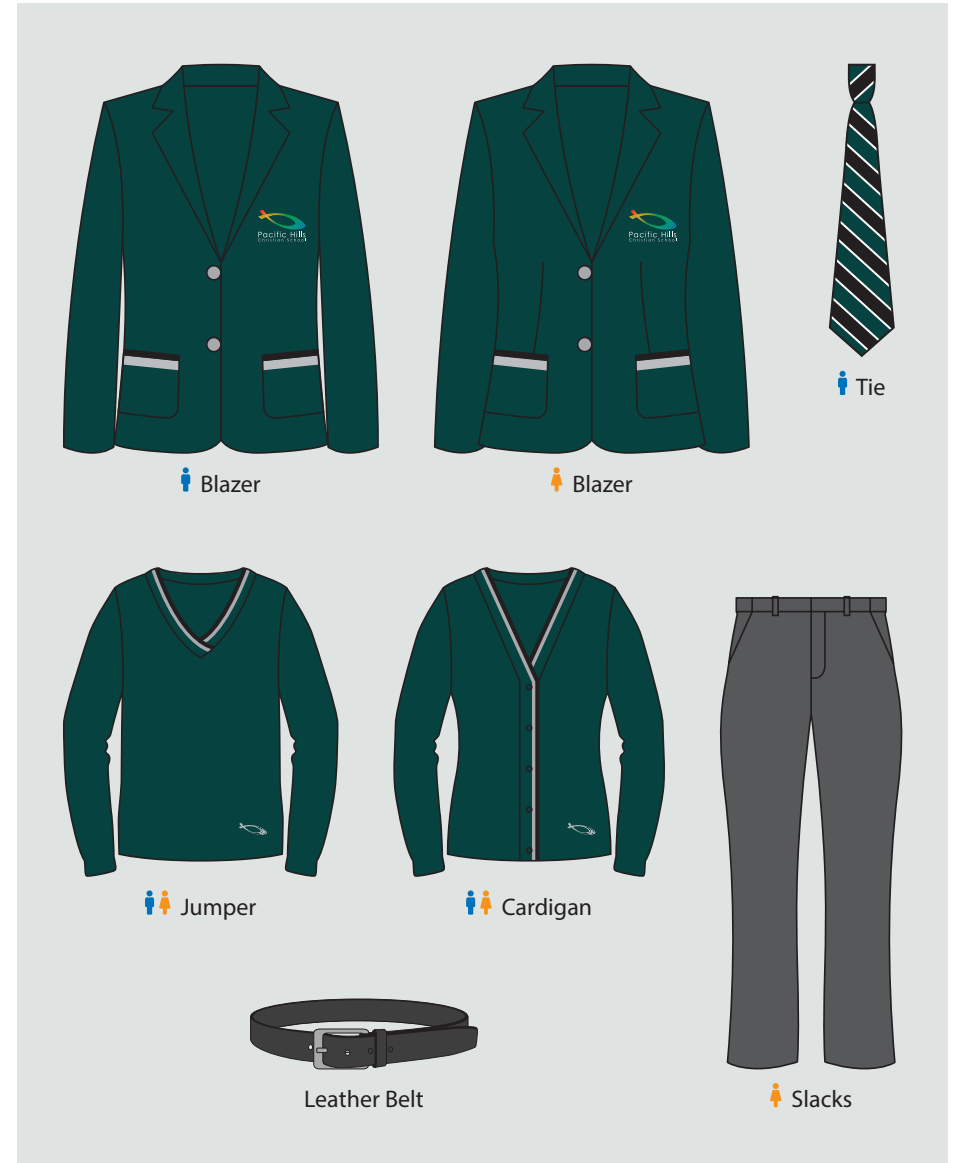
**WINTER
MIDDLE SCHOOL**



**WINTER
MIDDLE SCHOOL**



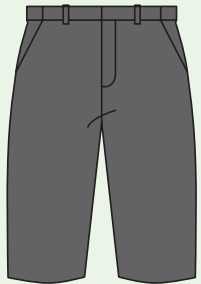
**WINTER
MIDDLE SCHOOL – OPTIONAL**



**SUMMER
MIDDLE SCHOOL**



Short Sleeve Shirt



Shorts



Grey Striped
Socks¹

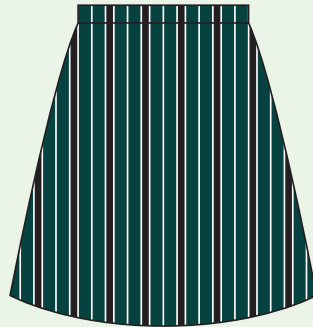


Black Shoes^{1,2}

**SUMMER
MIDDLE SCHOOL**



Short Sleeve Blouse



Skirt¹



White Socks



Black Shoes^{1,2}

**SUMMER
MIDDLE SCHOOL – OPTIONAL**



Blazer



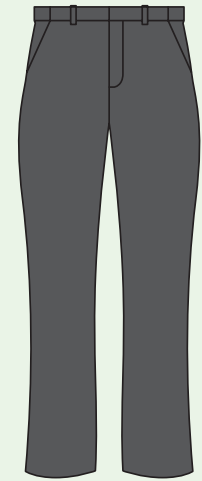
Blazer



Jumper



Cardigan



Slacks

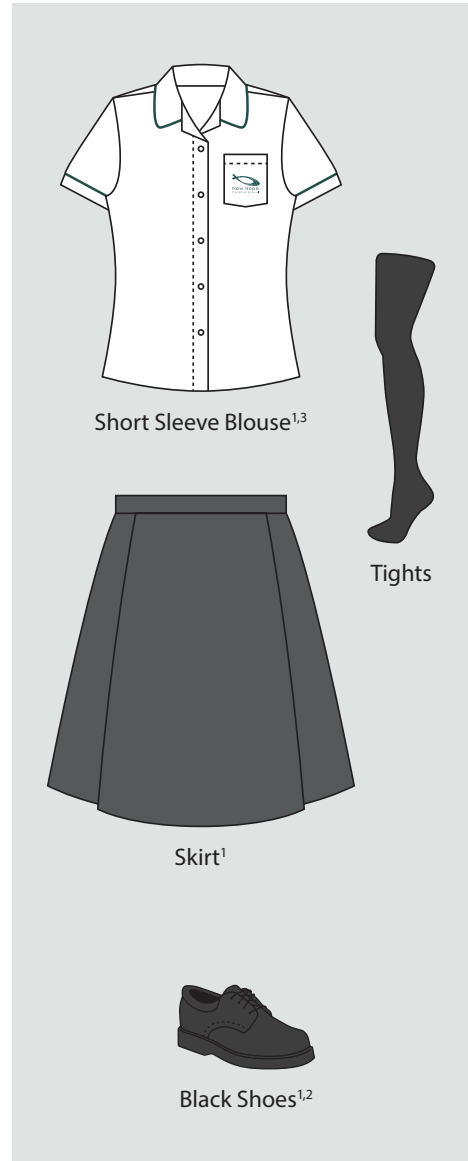


Leather Belt

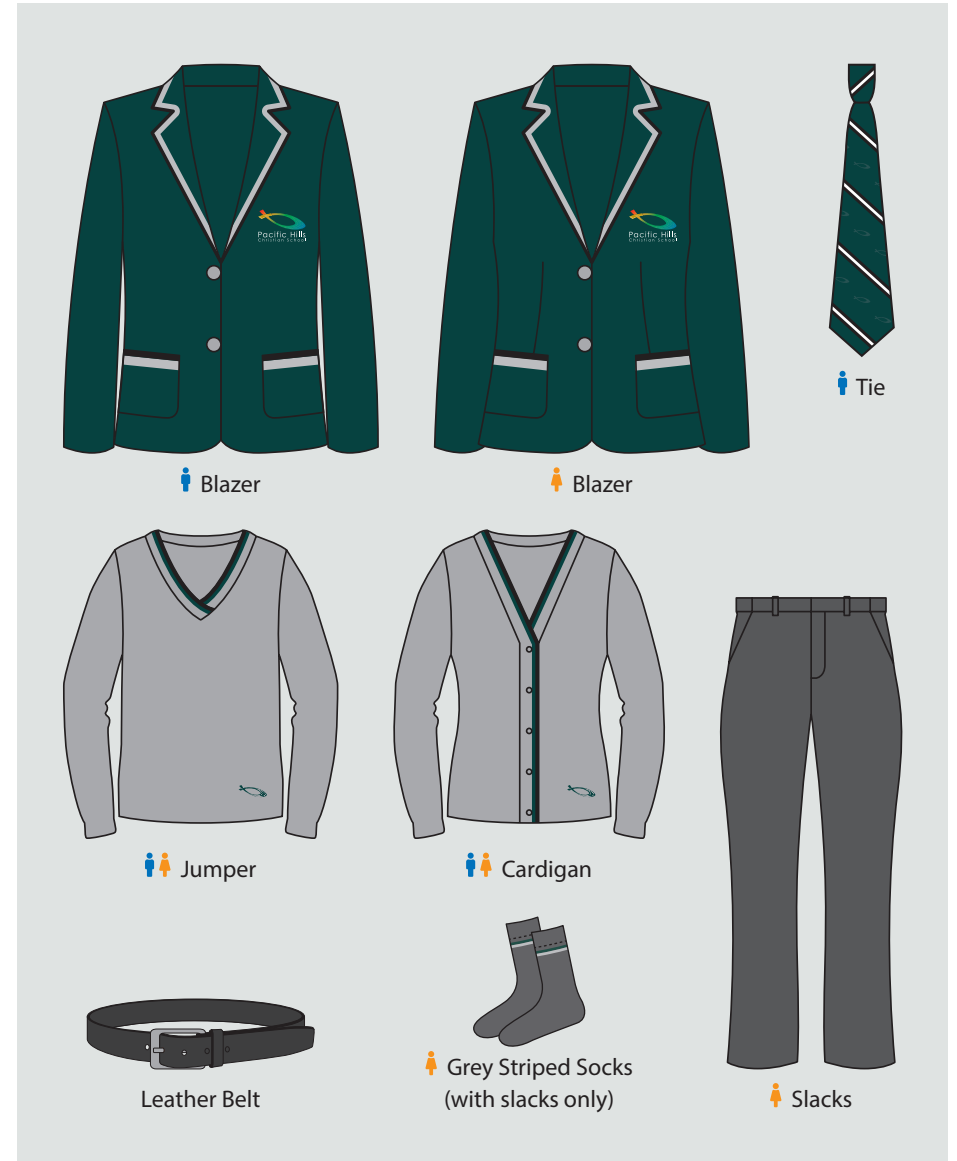
WINTER SENIOR SCHOOL



WINTER SENIOR SCHOOL



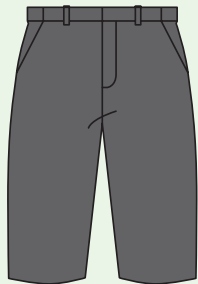
WINTER SENIOR SCHOOL – OPTIONAL



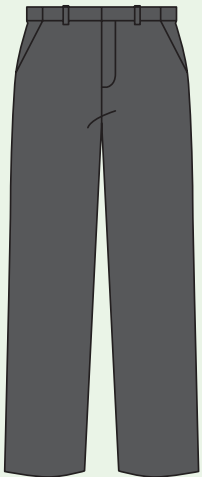
SUMMER SENIOR SCHOOL



Short Sleeve Shirt¹



Shorts
(Year 9 & 10)



Trousers³
(Year 11 & 12)



Grey Striped Socks¹

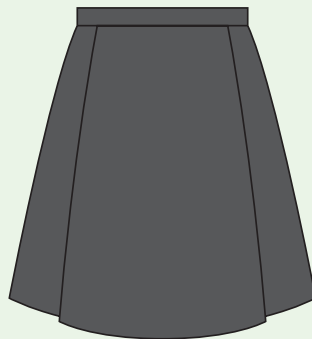


Black Shoes^{1,2}

SUMMER SENIOR SCHOOL



Short Sleeve Blouse¹



Skirt¹



White Socks



Black Shoes^{1,2}

SUMMER SENIOR SCHOOL – OPTIONAL



Blazer



Blazer



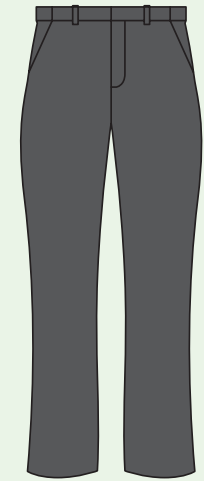
Tie³



Jumper



Cardigan



Slacks



Leather Belt



Grey Striped Socks
(with slacks only)

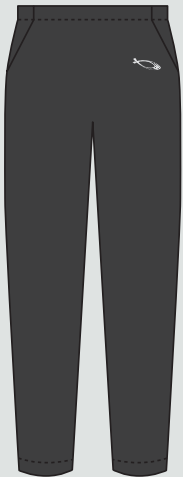
 **WINTER**
JUNIOR SCHOOL



Short Sleeve Polo Shirt



Soft Shell Jacket²



Trackpants



Sport Socks



Supportive Sports Jogger¹

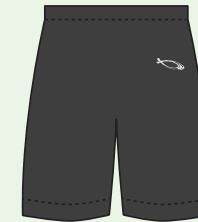
 **SUMMER**
JUNIOR SCHOOL



Short Sleeve Polo Shirt



Soft Shell Jacket²



Shorts



Sport Socks



Supportive Sports Jogger¹



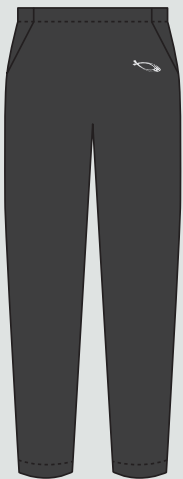
WINTER MIDDLE / SENIOR SCHOOL



Short Sleeve Polo Shirt



Soft Shell Jacket



Trackpants



Shorts²



Sport Socks



Supportive Sports Jogger¹



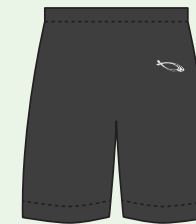
SUMMER MIDDLE / SENIOR SCHOOL



Short Sleeve Polo Shirt



Soft Shell Jacket²



Shorts



Sport Socks



Supportive Sports Jogger¹

¹ Shoes not provided ² Optional

ACCESSORIES



Cap (MS/SS)



Backpack (JS)



Backpack (MS/SS)



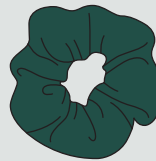
Scarf



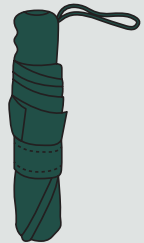
👧 Hair Ties



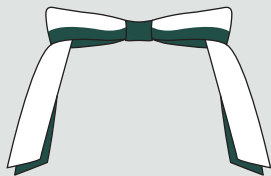
👧 Head Band (JS)



👧 Scrunchie (JS)



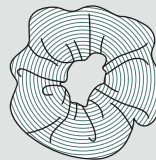
Umbrella



👧 Ribbons (JS)



👧 Head Band (MS/SS)



👧 Scrunchie (MS/SS)



New Hope
Christian School

9-15 Quarry Road, Dural NSW 2158 • P 02 9651 0786
E info@newhope.nsw.edu.au • W newhope.nsw.edu.au